



Paperless recorder

JUMO LOGOSCREEN *nt*



New



LOGOSCREEN nt: Th



New:

- operating concept
- presentation of process diagrams
- up to 256 MB of internal memory
- External memory: CompactFlash® Card addressable up to 2 GB
- connection for barcode reader
- e-mail alarm generation
- integrated web server
- three batch reports simultaneously
- MOD-Bus master function
- two user languages in the instrument, others can be loaded via the setup software
- up to four customized linearization tables
- five possible interfaces in the instrument: RS232, RS485, Ethernet, PROFIBUS-DP, setup
- IP65 protection
- PC communication and evaluation software
- nine separate math and logic channels

- 18 internal analog inputs
- 24 internal binary I/Os
- seven relays
- additionally
 - 24 external analog inputs
 - 24 external binary I/Os
 - 27 counters/integrators

New operating concept



- “turn & press” operation through a single control knob
- standard: user languages in the instrument (English/German)
- changeover between the user languages can be made during operation
- other user languages include: French, Russian, Japanese, Chinese
- operators can set up and implement a new user language

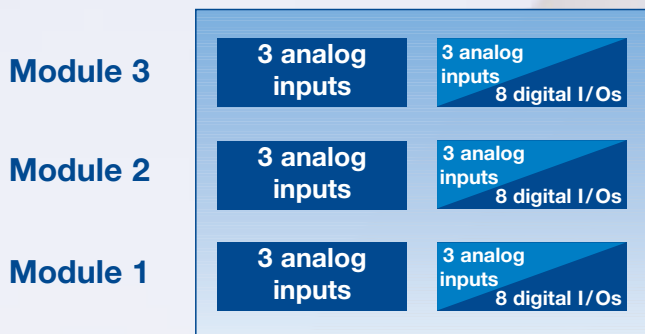
Data storage

- 125 msec min. cycle time for 18 internal analog inputs
- internal data storage 64 – 256 MB
- group-oriented data stor

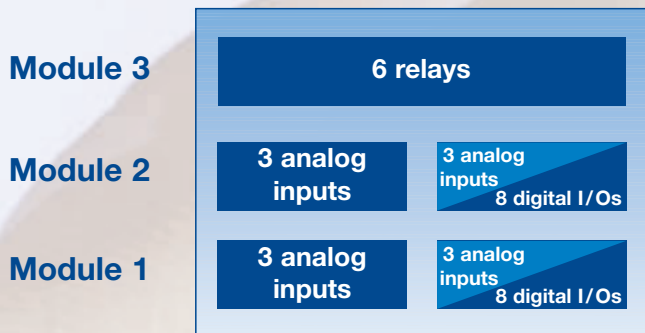
Modular hardware concept

Possible back panels

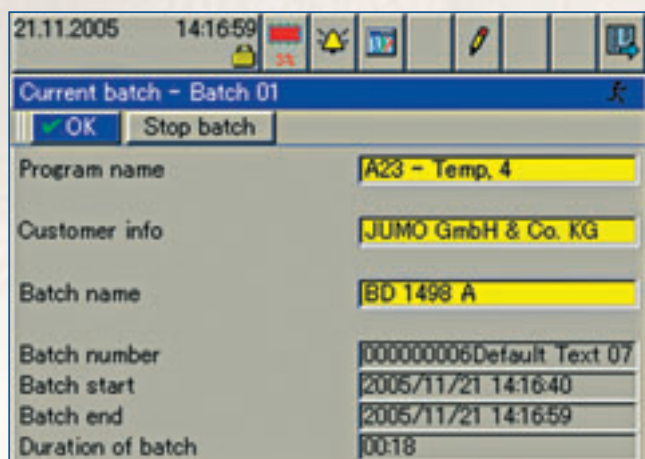
■ Back panel 1



■ Back panel 2



Batch reports



- three batch reports simultaneously
- 18 analog inputs/batch
- batch texts can be generated via barcode reader

- automatic printout of batch reports is under development

Further presentation modes

- Log-in with user ID and password



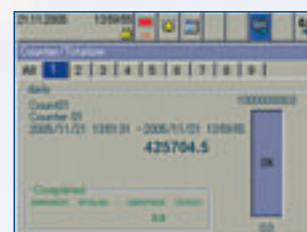
- curve presentation of analog and digital channels
- numerical display of the currently active analog channels



- bar graph display of the analog channels
- color change of bar graph if limits are infringed



- presentation of up to 27 counters or integrators
- display of the current and the most recently completed count



- schematic representation of a process
- display of up to twelve measurements within the process diagram



Fax reply

(for fax number see address below)

PR 70071 GB "Paperless Recorder **JUMO** LOGOSCREEN nt"

Please send me full information:

- Paperless Recorder** **JUMO** LOGOSCREEN nt
(data sheet 70.6580)

Please send me your:

- Product Guide** (PR 00046 GB)
 Free CD "Products"

Please contact:

Name

Phone

Date/time

Sender:

Name

Company

Address

Industry

Phone

Fax

e-mail

Date

stamp and signature



JUMO GmbH & Co. KG

Street address:
Moltkestraße 13 - 31
36039 Fulda, Germany
Postal address:
36035 Fulda, Germany
Phone: +49 661 6003-0
Fax: +49 661 6003-607
e-mail: mail@jumo.net
Internet: www.jumo.net

JUMO Instrument Co. Ltd.

JUMO House
Temple Bank, Riverway
Harlow, Essex CM 20 2TT, UK
Phone: +44 12 79 63 55 33
Fax: +44 12 79 63 52 62
e-mail: sales@jumo.co.uk
Internet: www.jumo.co.uk

JUMO Process Control, Inc.

8 Technology Boulevard
Canastota, NY 13032
USA
Phone: 315-697-JUMO
800-554-JUMO
Fax: 315-697-5867
e-mail: info@jumo.us
Internet: www.JUMO.us

3.06/00460956